

ISO 200/24"

9 7 6 1 00/24"

ISO 200/24"

9 7 6 1



0 0A 1 1A 2 34A 35 35A 36 36A

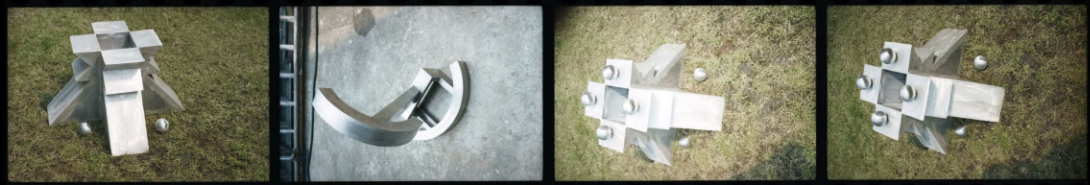


→23A 24 →24A 25 →25A 26 →24A E



5 →5A 1 →1A 2

100H637



17 →17A 18 →18A 19 →19A 20 →20A

100H637



→2A 3 →3A 4 →4A 5 →5A 6

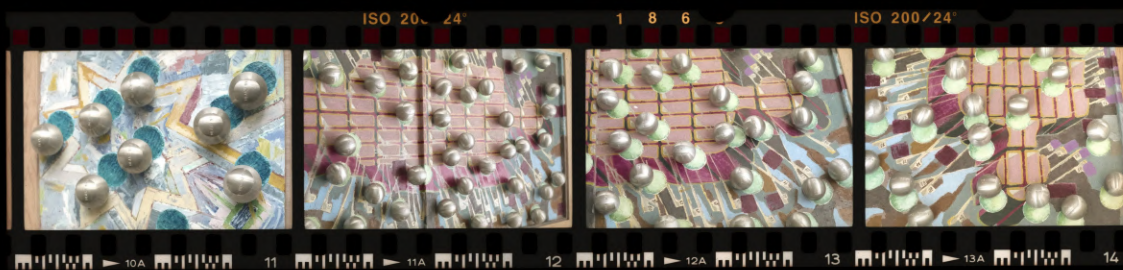
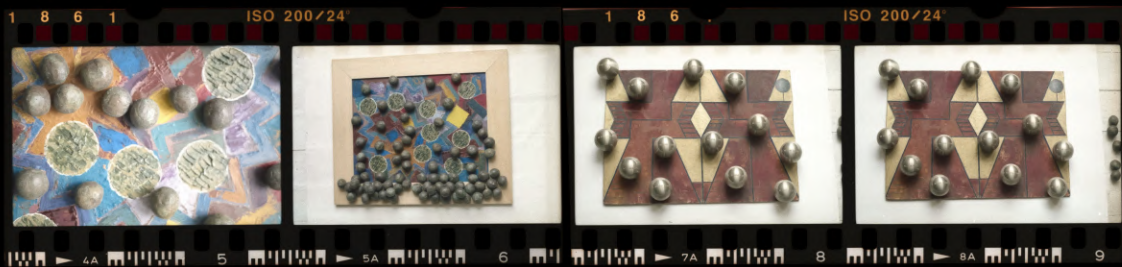
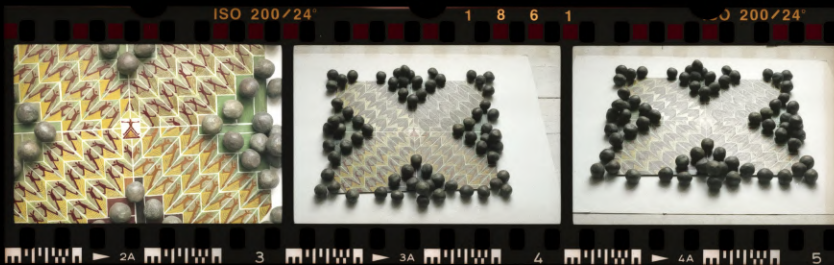
100H637

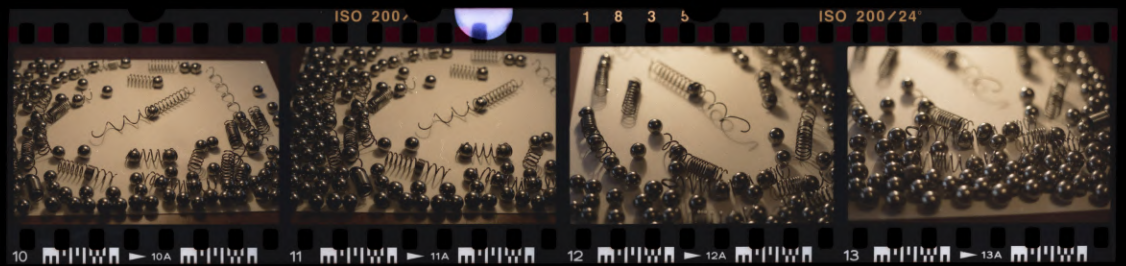
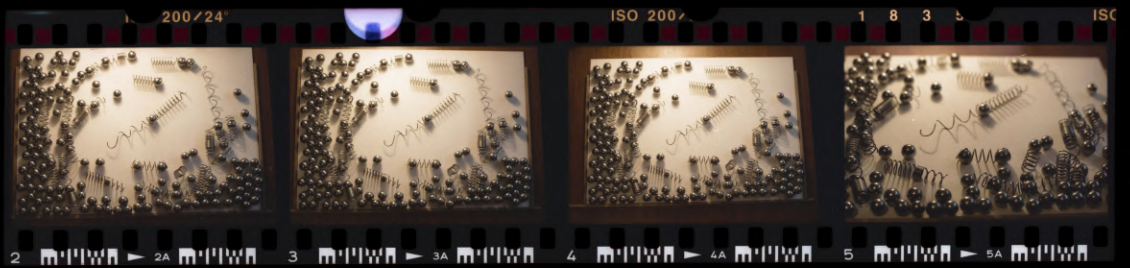


→6A 7 →7A 8 →8A 9 →9A 10

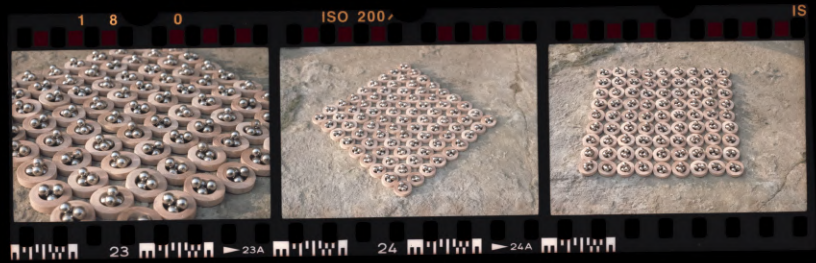
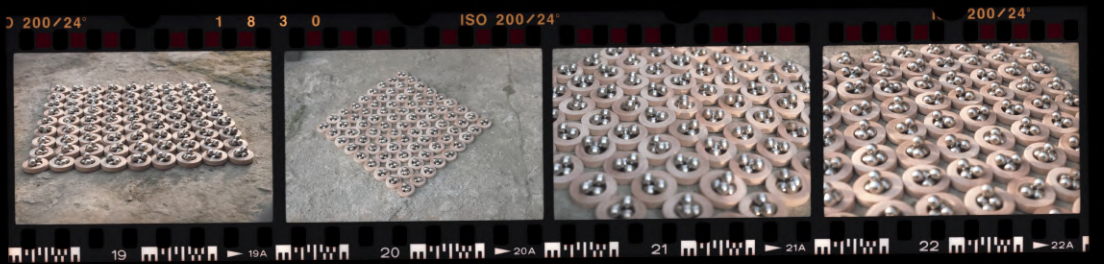
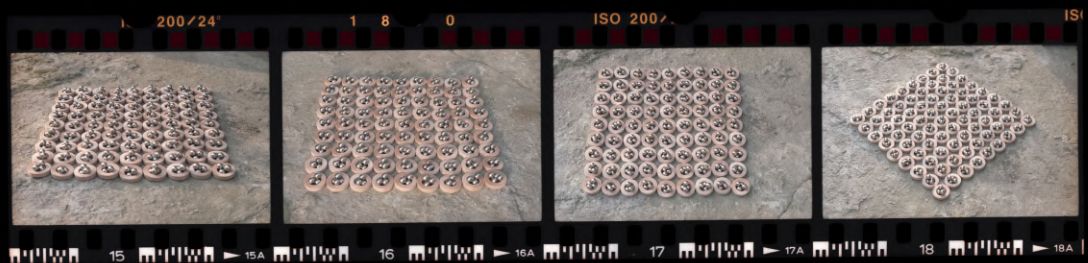
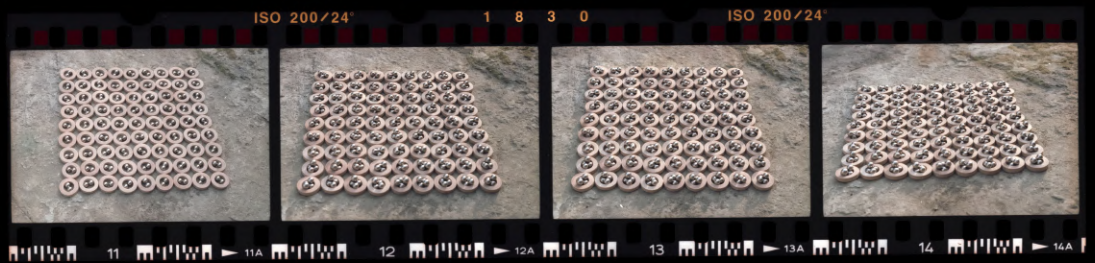
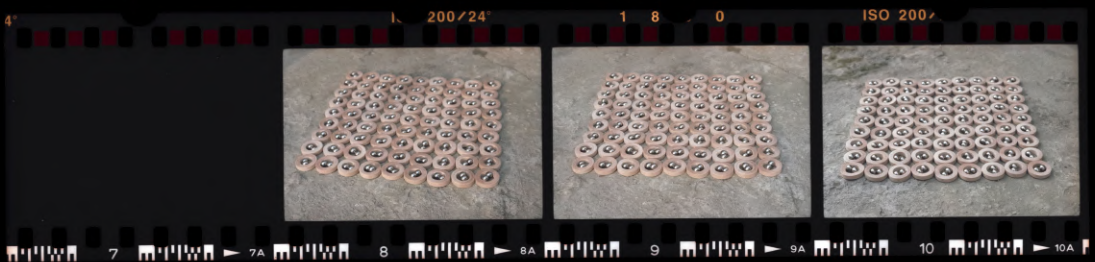
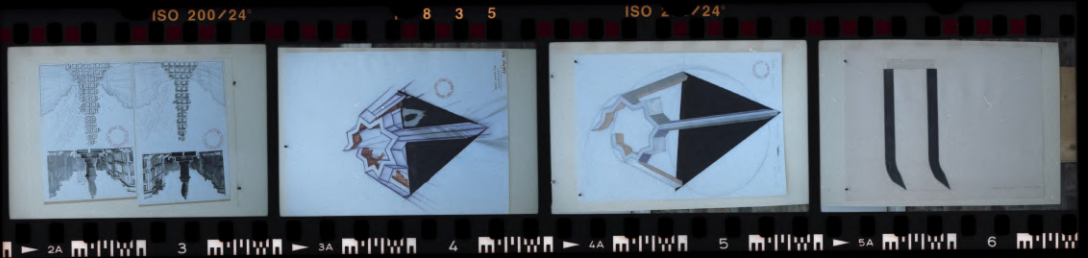
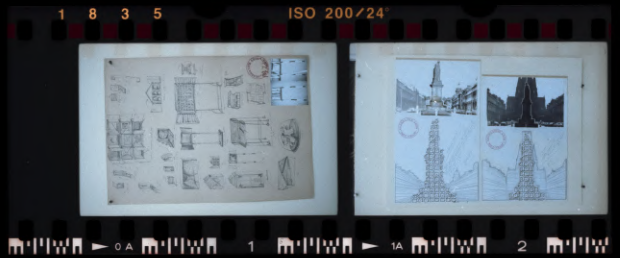


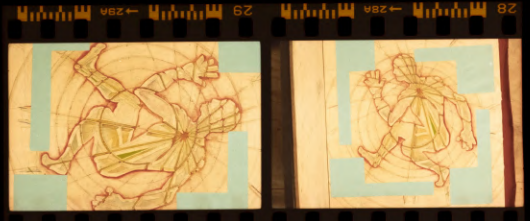
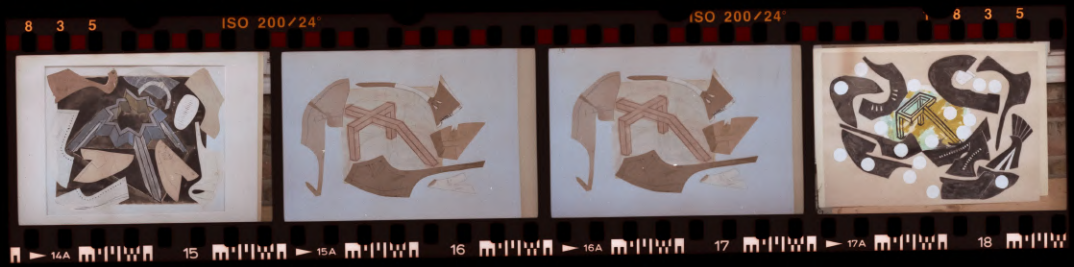
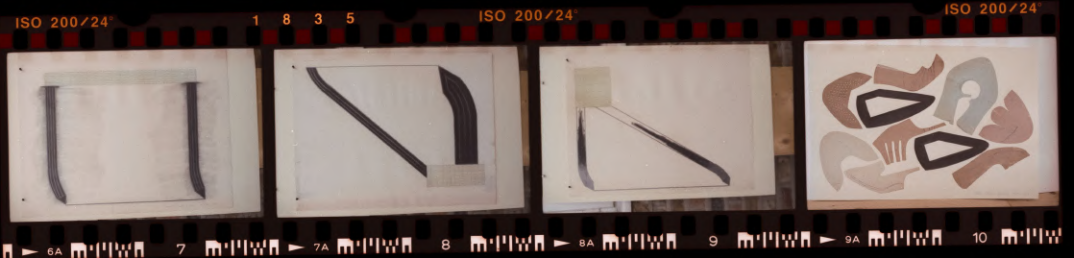
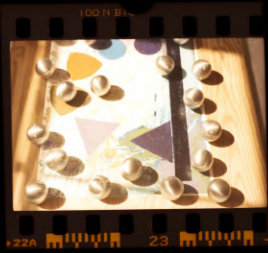
→14A 15 →15A 16 →16A 17 →17A 18



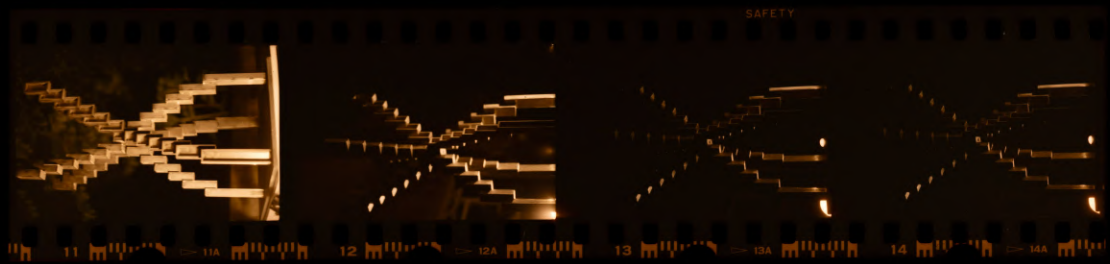
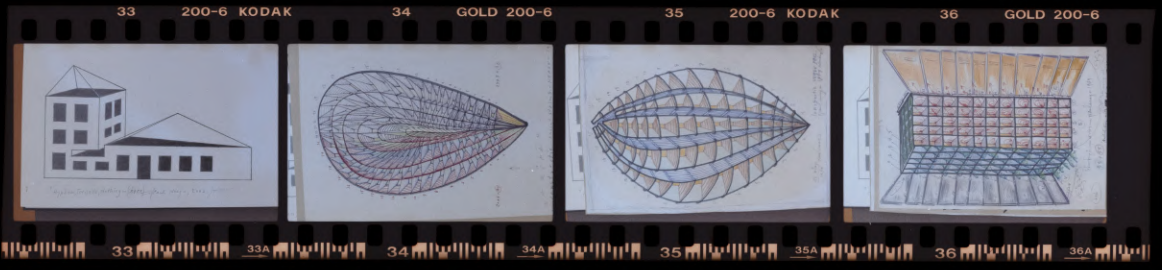
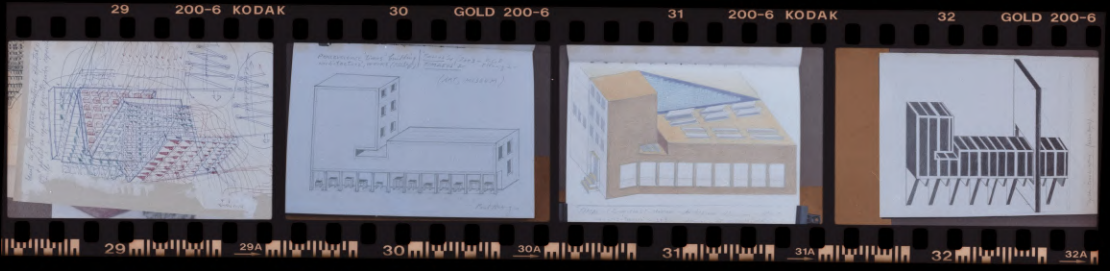
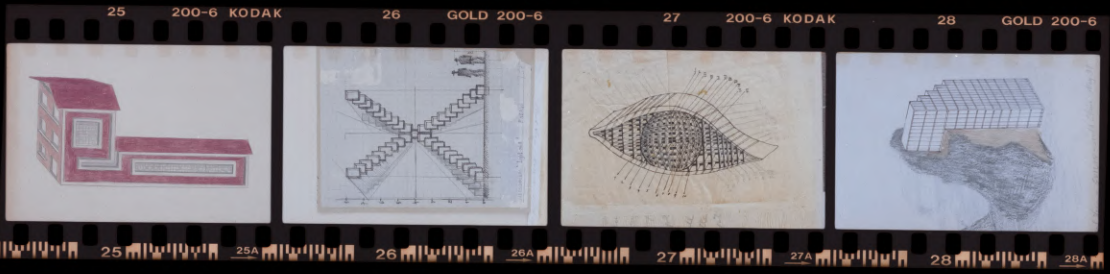












2 NPC160 22A 925 23 NPC160 23A 24 NPC160 24A 25 NPC160 25A FUJII 2



12 12 22A 23 23A 24 24A 25 25A

8 NPC160 18A 925 19 NPC160 19A 20 NPC160 20A 21 NPC160 21A FUJII 2



18 18A 19 19A 20 20A 21 21A

4 NPC160 14A 925 15 NPC160 15A 16 NPC160 16A 17 NPC160 17A FUJII 1



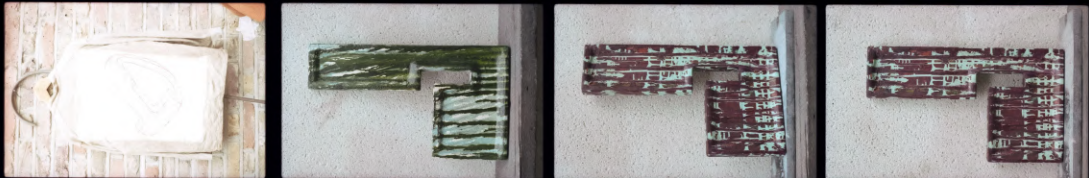
14 14A 15 15A 16 16A 17 17A

10 NPC160 10A 925 11 NPC160 11A 12 NPC160 12A 13 NPC160 13A FUJII 1



10 10A 11 11A 12 12A 13 13A

6 NPC160 6A 925 7 NPC160 7A 8 NPC160 8A 9 NPC160 9A FUJII 1



6 6A 7 7A 8 8A 9 9A

2 NPC160 2A 925 3 NPC160 3A 4 NPC160 4A 5 NPC160 5A FUJII 1

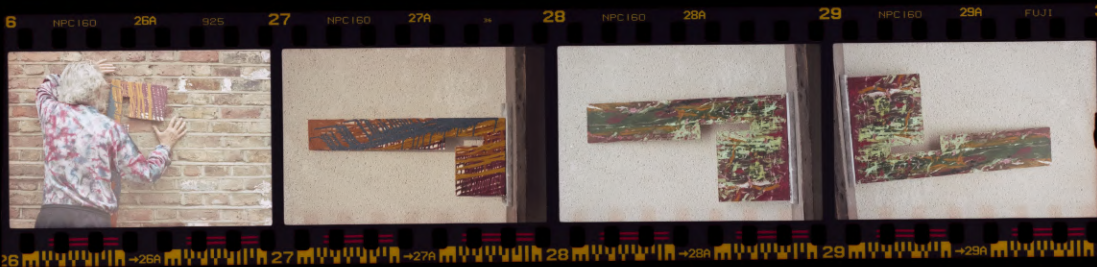
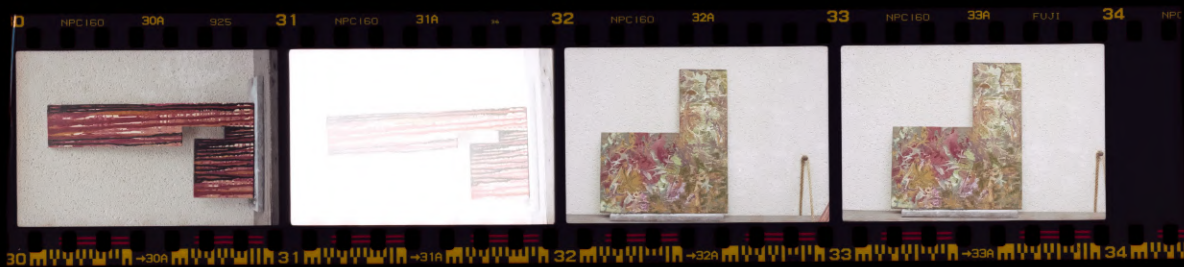
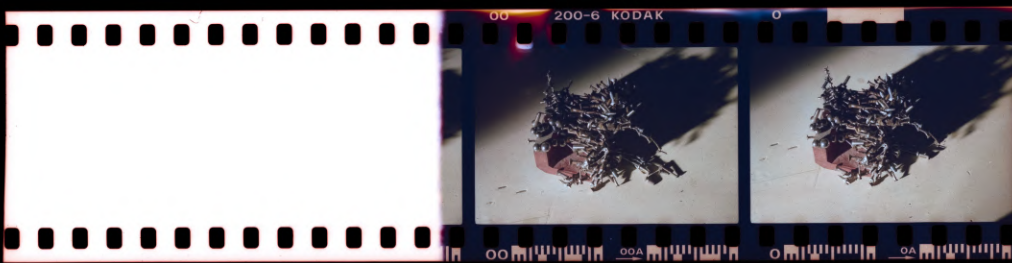
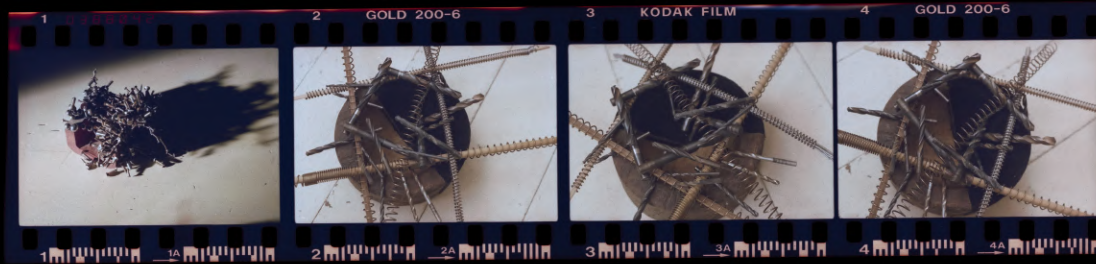
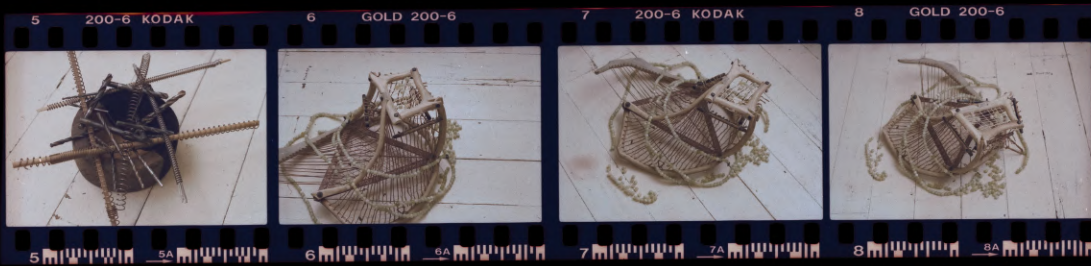
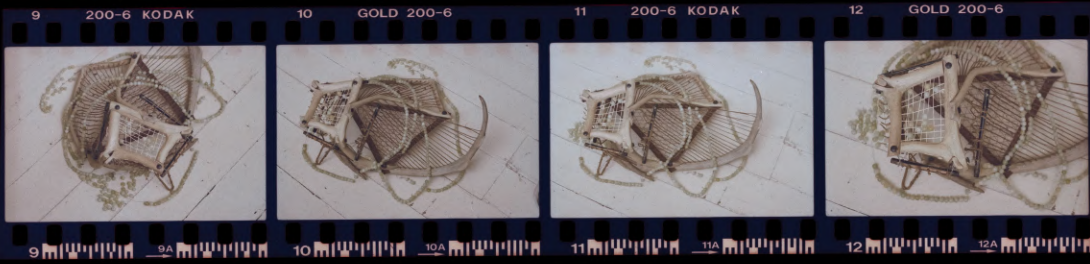
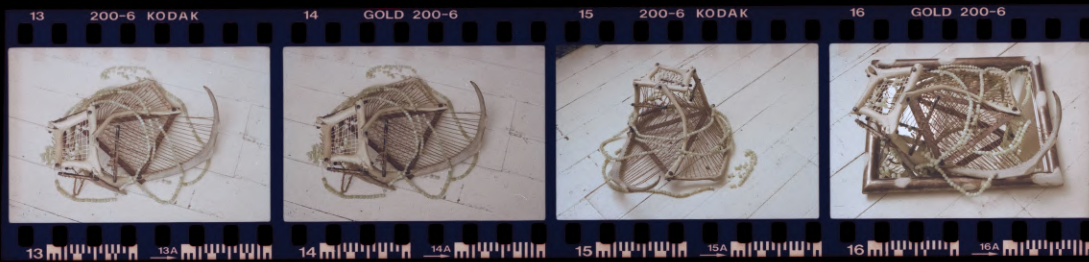


2 2A 3 3A 4 4A 5 5A

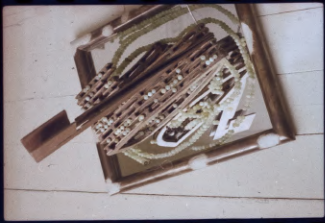
00 NPC160 00A 0 NPC160 0A 1 NPC160 1A FUJII 1



00 00A 0 0A 1 1A



33 200-6 KODAK



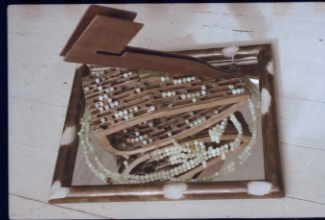
33 33A

34 GOLD 200-6



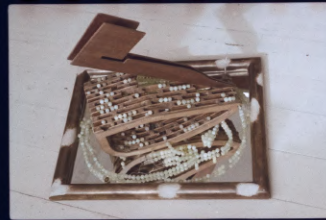
34 34A

35 200-6 KODAK



35 35A

36 GOLD 200-6



36 36A

29 200-6 KODAK



29 29A

30 GOLD 200-6



30 30A

31 200-6 KODAK



31 31A

32 GOLD 200-6



32 32A

25 200-6 KODAK



25 25A

26 GOLD 200-6



26 26A

27 200-6 KODAK



27 27A

28 GOLD 200-6



28 28A

21 200-6 KODAK



21 21A

22 GOLD 200-6



22 22A

23 200-6 KODAK



23 23A

24 GOLD 200-6



24 24A

17 200-6 KODAK



17 17A

18 GOLD 200-6



18 18A

19 200-6 KODAK



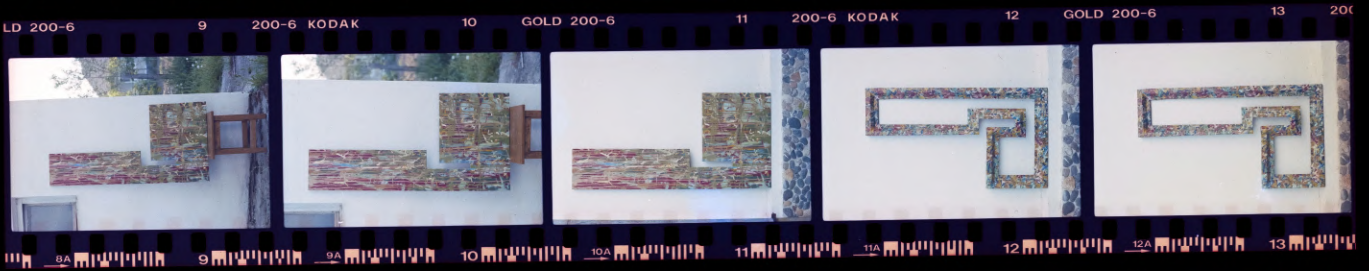
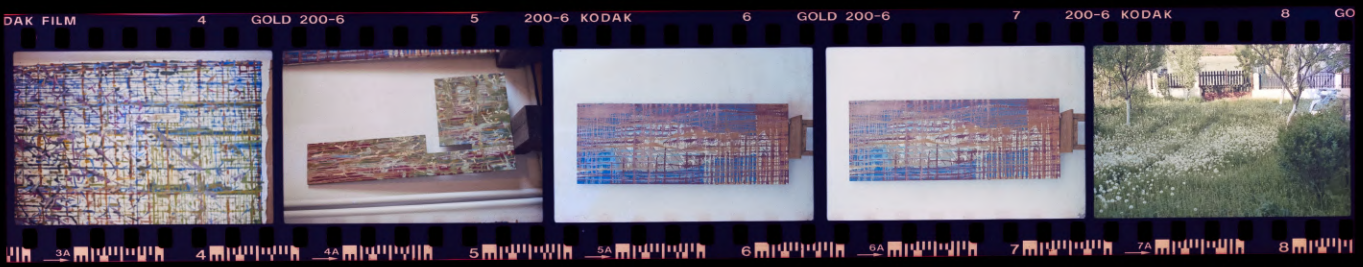
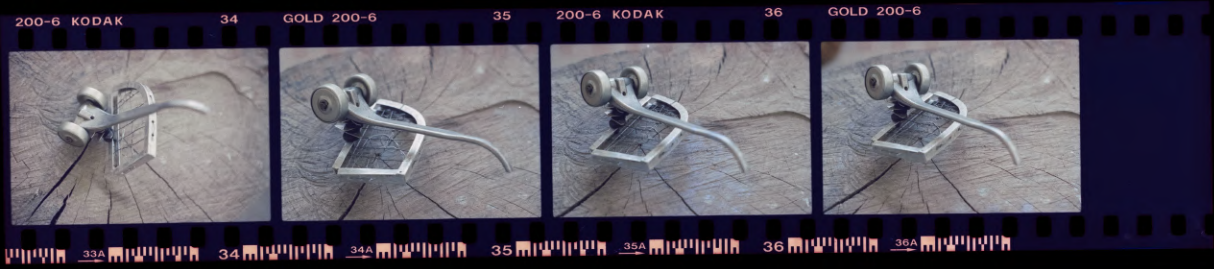
19 19A

20 GOLD 200-6



20 20A





LD 200-6 19 200-6 KODAK 20 GOLD 200-6 21 200-6 KODAK 22 GOLD 200-6 23 20



18A 19 19A 20 20A 21 21A 22 22A 23

0-6 KODAK 24 GOLD 200-6 25 200-6 KODAK 26 GOLD 200-6 27 200-6 KODAK 28 GO



23A 24 24A 25 25A 26 26A 27 27A 28

LD 200-6 29 200-6 KODAK 30 GOLD 200-6 31 200-6 KODAK 32 GOLD 200-6 33 20



28A 29 29A 30 30A 31 31A 32 32A 33

0-6 KODAK 34 GOLD 200-6 35 200-6 KODAK 36 GOLD 200-6



33A 34 34A 35 35A 36 36A

Handwritten text in red ink, possibly a signature or note, partially obscured by a logo.



200-6 KODAK 1

00A 0 0A 1

2 GOLD 200-6 3 KODAK FILM 4 GOLD 200-6 5 200-6 KODAK 6 G



1A 2 2A 3 3A 4 4A 5 5A 6

OLD 200-6 7 200-6 KODAK 8 GOLD 200-6 9 200-6 KODAK 10 GOLD 200-6 11



6A 7 7A 8 8A 9 9A 10 10A 11

200-6 KODAK 12 GOLD 200-6 13 200-6 KODAK 14 GOLD 200-6 15 200-6 KODAK 16



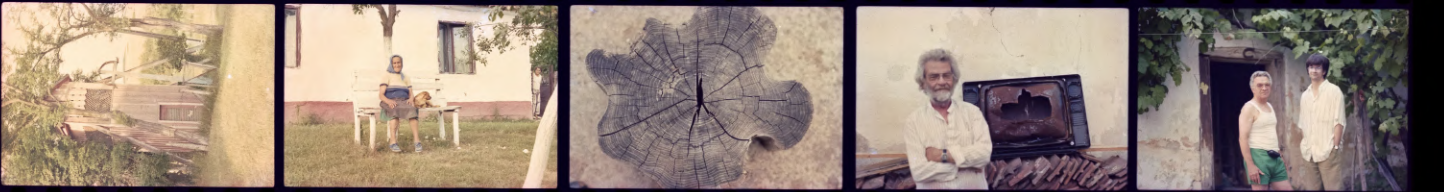
11A 12 12A 13 13A 14 14A 15 15A 16

OLD 200-6 17 200-6 KODAK 18 GOLD 200-6 19 200-6 KODAK 20 GOLD 200-6 21



16A 17 17A 18 18A 19 19A 20 20A 21

200-6 KODAK 22 GOLD 200-6 23 200-6 KODAK 24 GOLD 200-6 25 200-6 KODAK 26



21A 22 22A 23 23A 24 24A 25 25A 26

OLD 200-6 27 200-6 KODAK 28 GOLD 200-6 29 200-6 KODAK 30 GOLD 200-6 31



26A 27 27A 28 28A 29 29A 30 30A 31

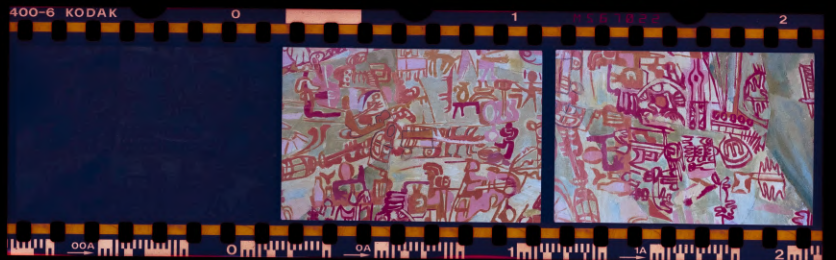
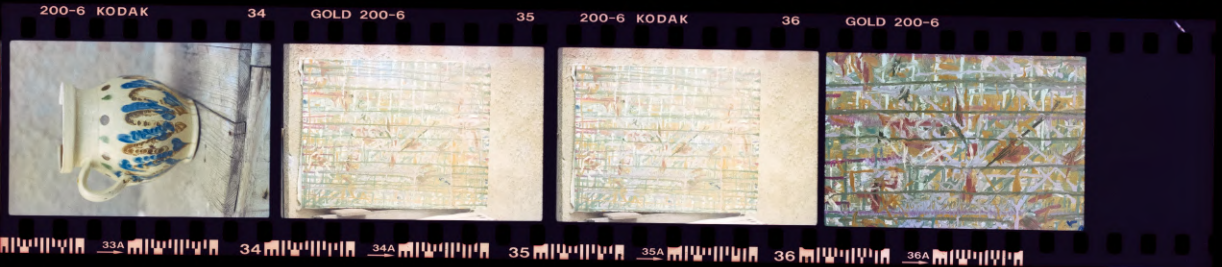
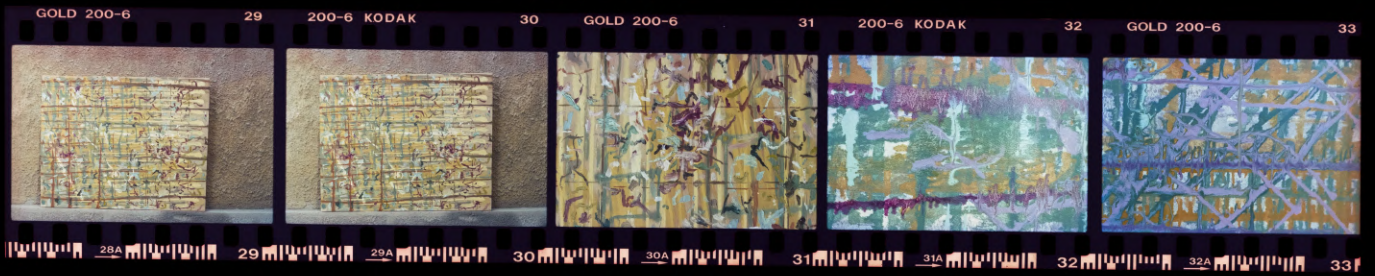
200-6 KODAK 32 GOLD 200-6 33 200-6 KODAK 34 GOLD 200-6 35 200-6 KODAK 36



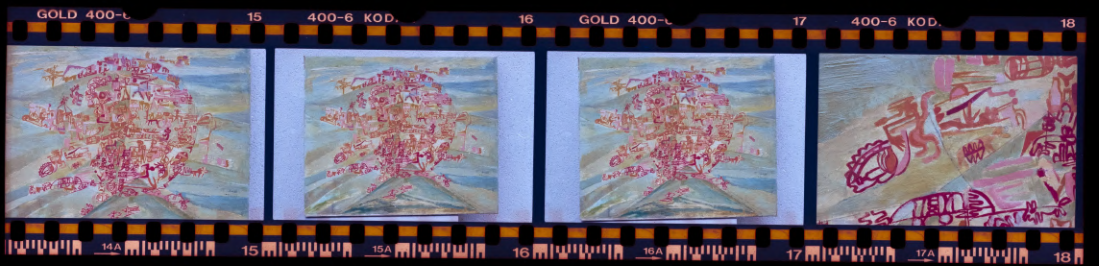
31A 32 32A 33 33A 34 34A 35 35A 36

Paul Neary - Movie 200 (II)
Video by: Enache



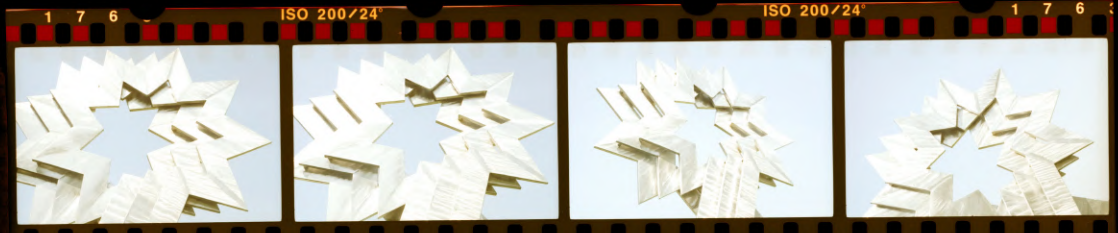


GAINA painting
 Postcode
 the perforated line, enclose the negatives and take it to your F



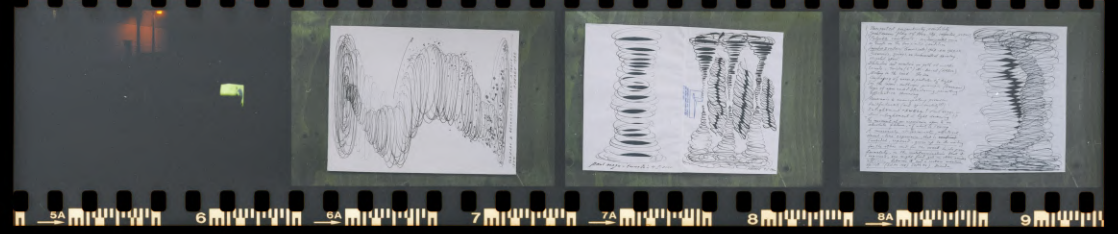
ahead

2000
atives and take it to yo

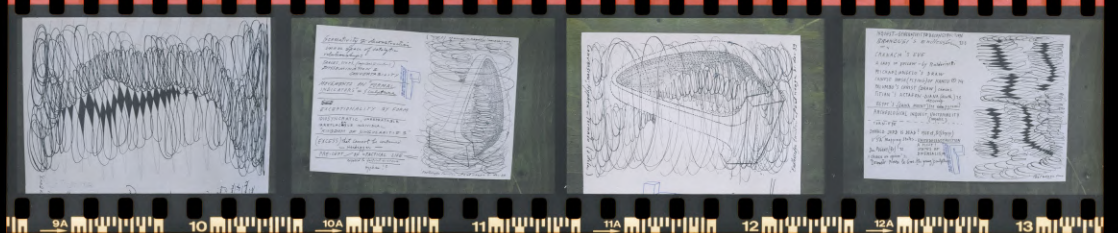


6A 7 7A 8 8A 9 9A 10

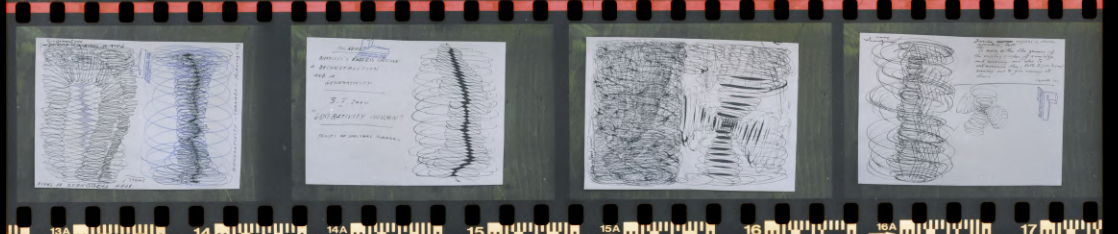
6 KODAK 6 GOLD 200-6 7 200-6 KODAK 8 GOLD 200-6 9 200



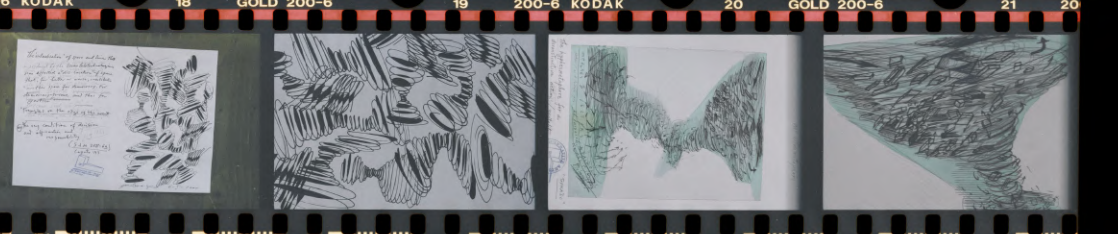
6 KODAK 10 GOLD 200-6 11 200-6 KODAK 12 GOLD 200-6 13 200



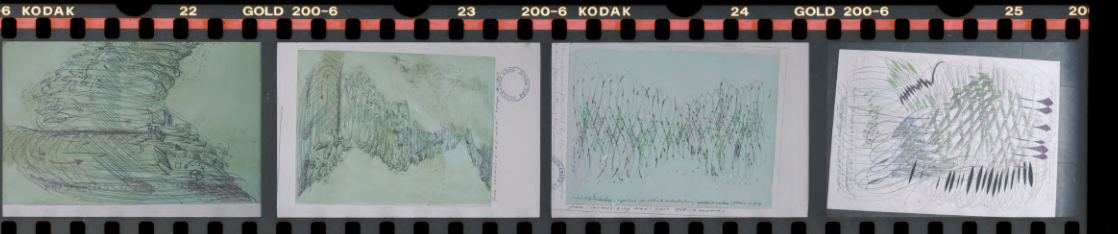
6 KODAK 14 GOLD 200-6 15 200-6 KODAK 16 GOLD 200-6 17 20



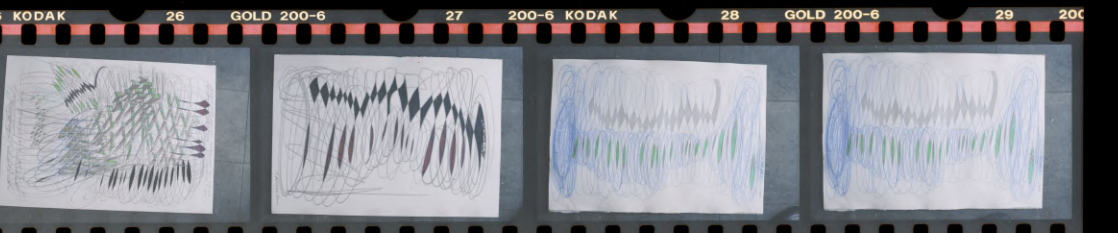
0-6 KODAK 18 GOLD 200-6 19 200-6 KODAK 20 GOLD 200-6 21 20

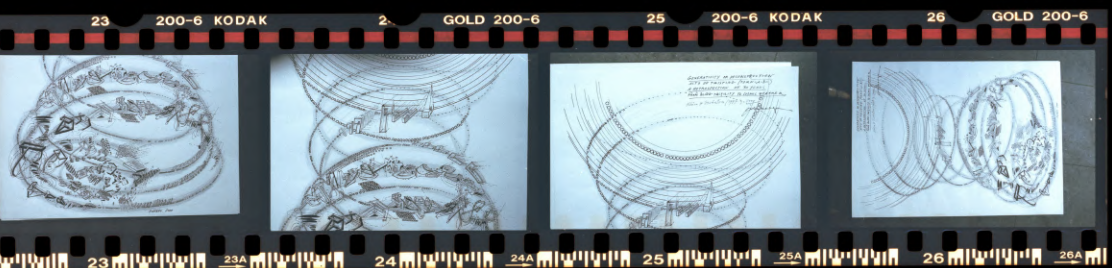
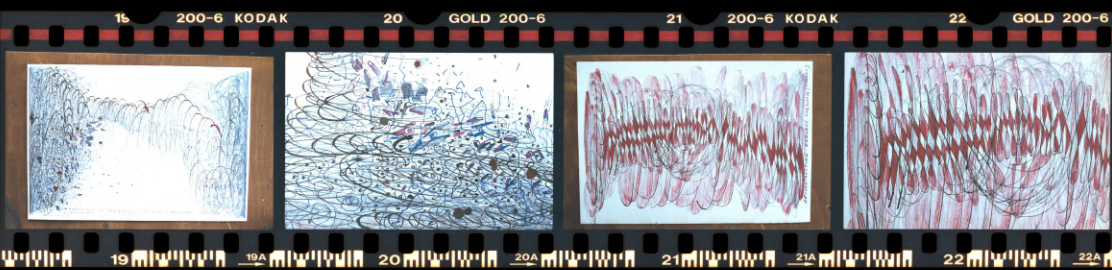
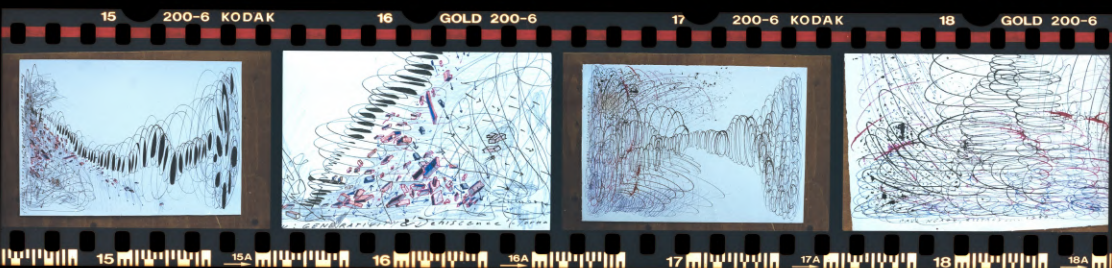
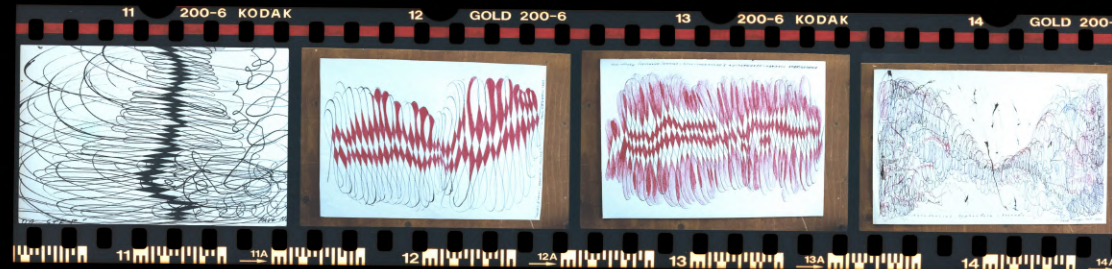
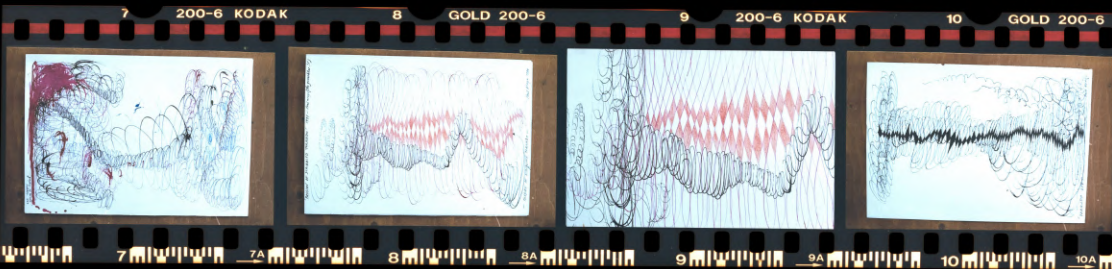
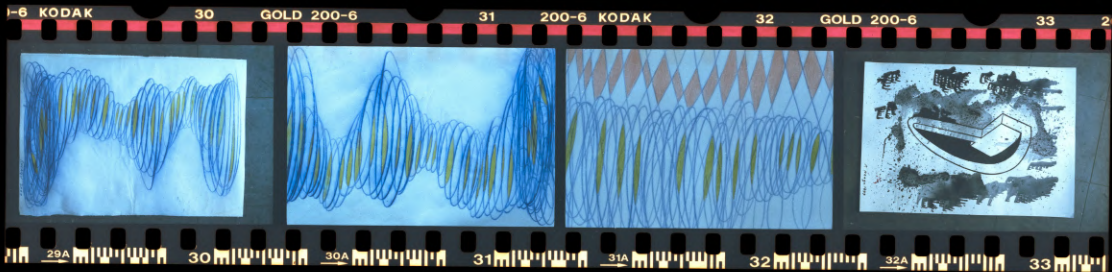


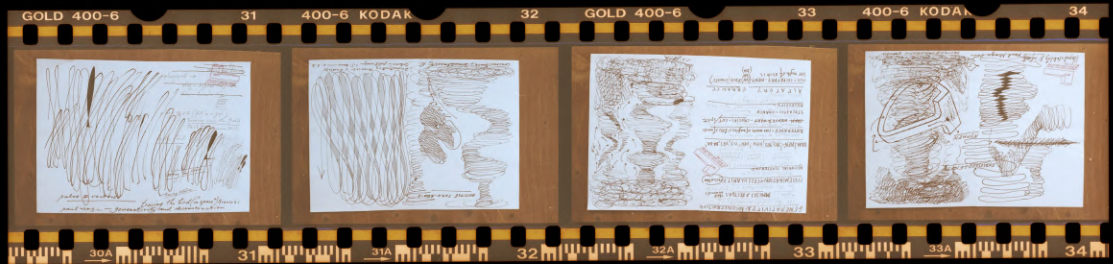
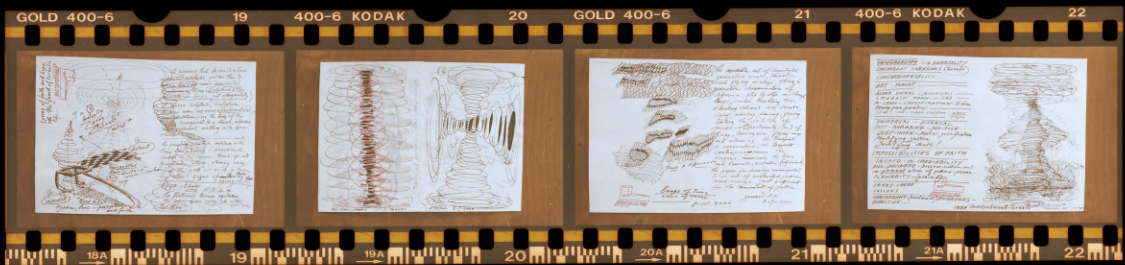
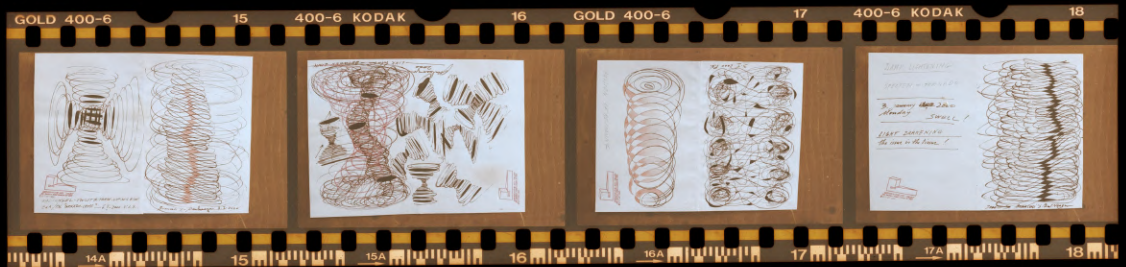
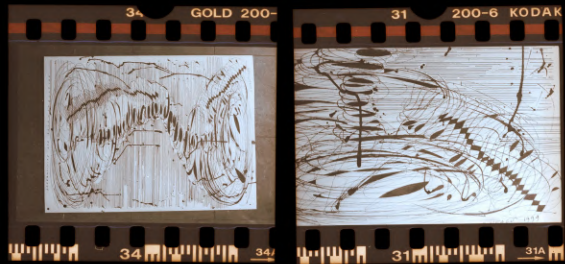
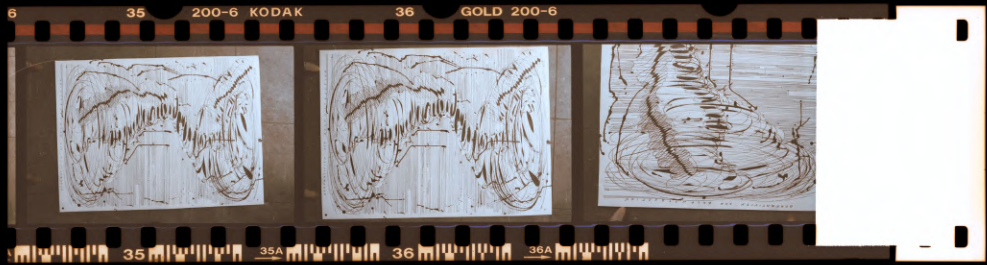
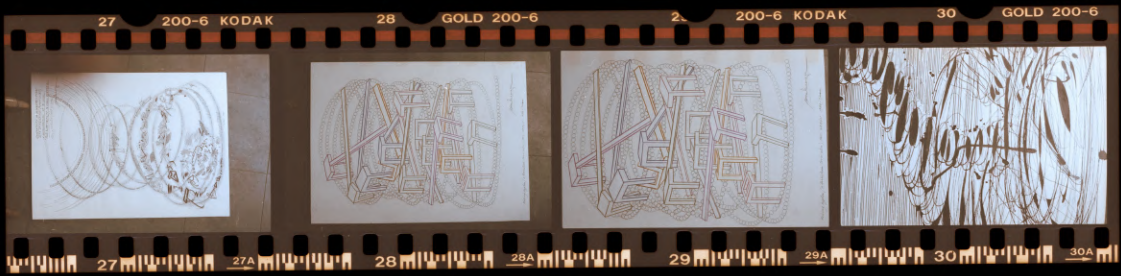
0-6 KODAK 22 GOLD 200-6 23 200-6 KODAK 24 GOLD 200-6 25 20



0-6 KODAK 26 GOLD 200-6 27 200-6 KODAK 28 GOLD 200-6 29 200





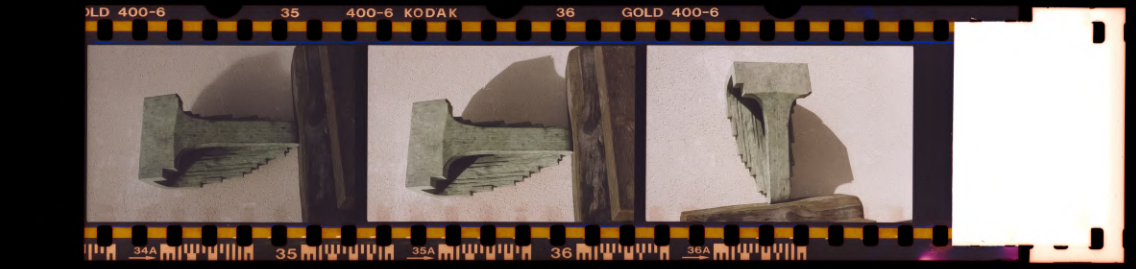
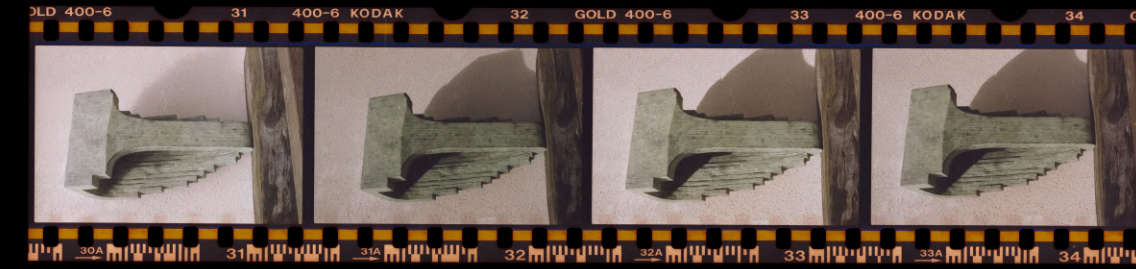
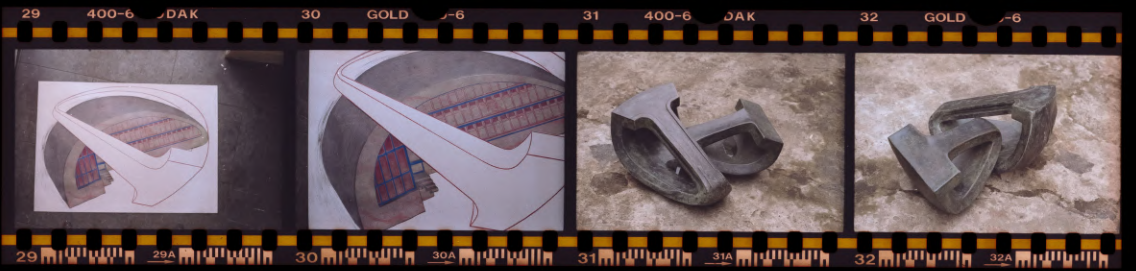


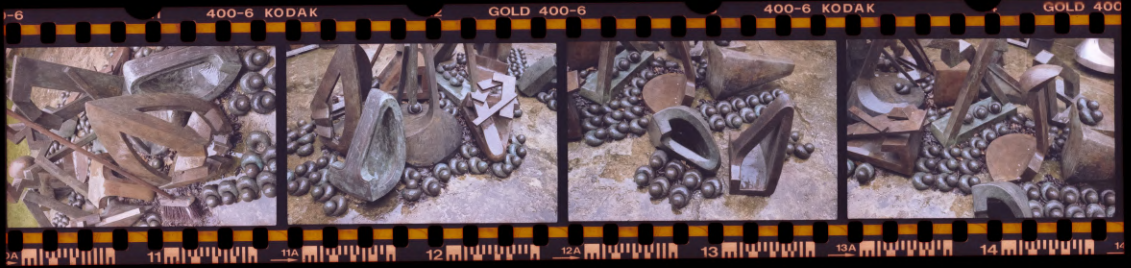
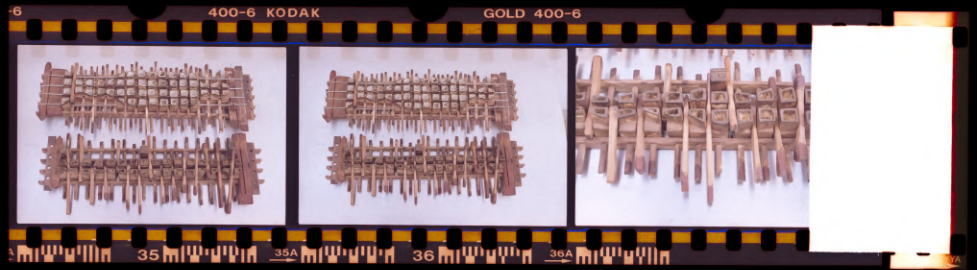
BRONZE +
2000

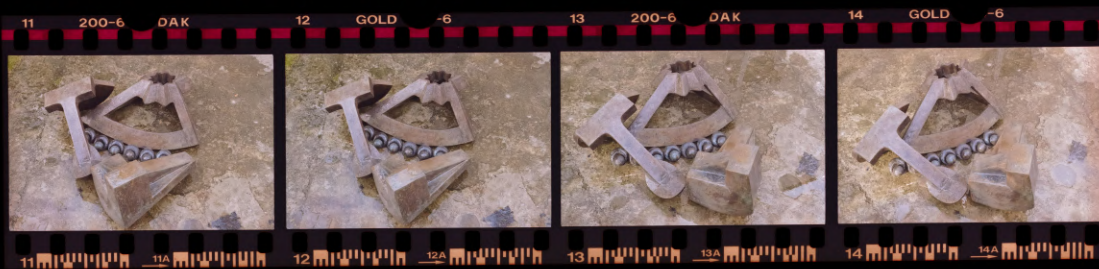
Postcode

line, enclose the negatives and take it to your Foto View dealer.

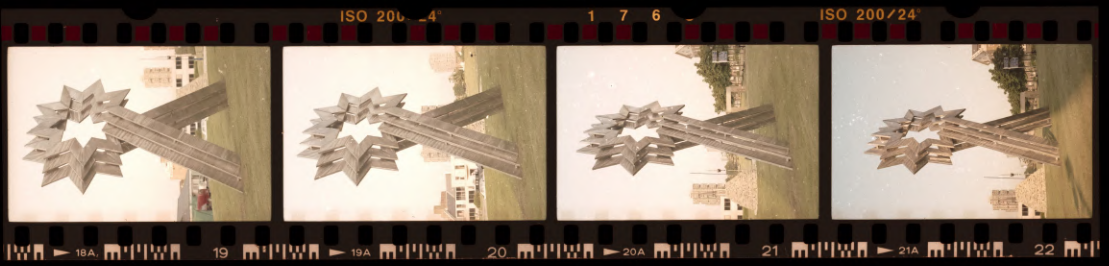
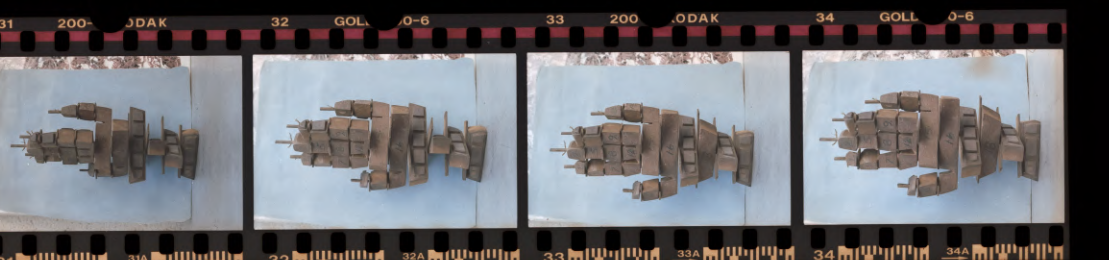
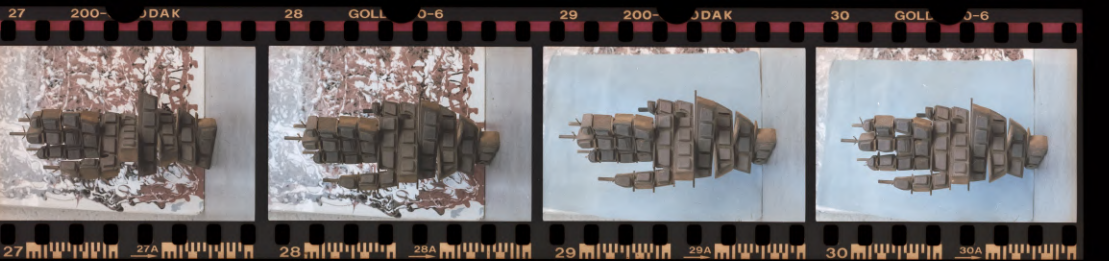
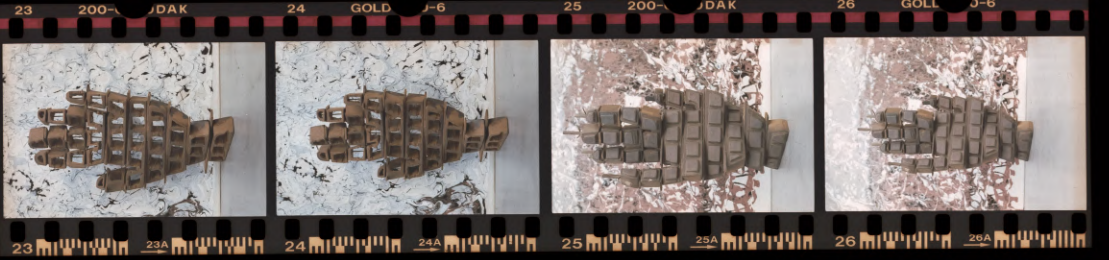








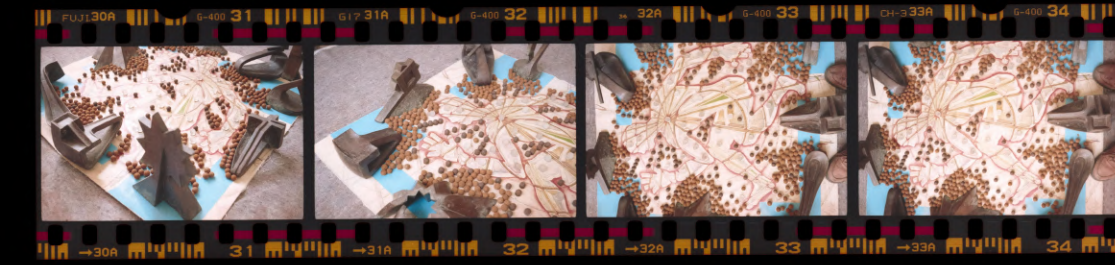
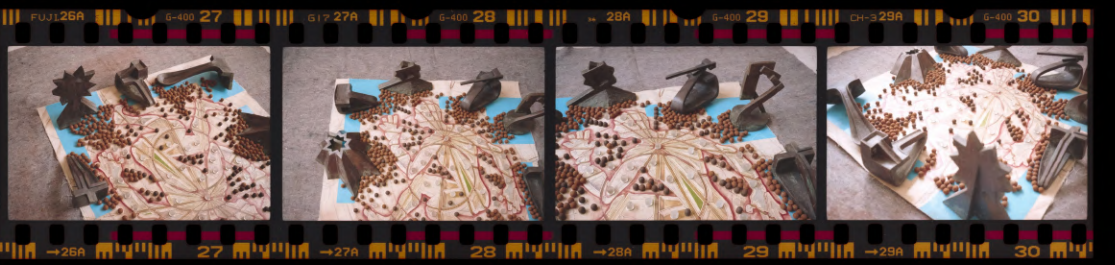
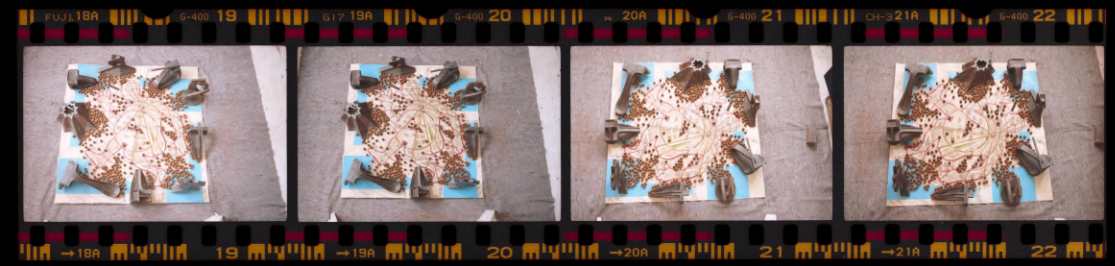
Bronze HANDS
 Postcode
 line, enclose the negatives and

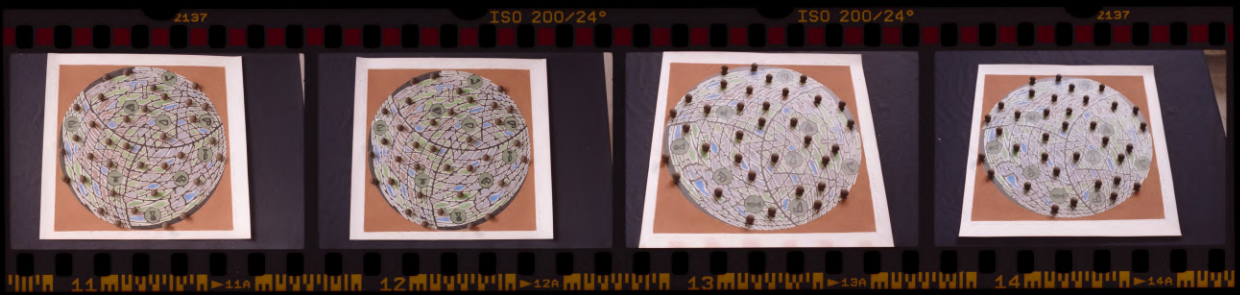
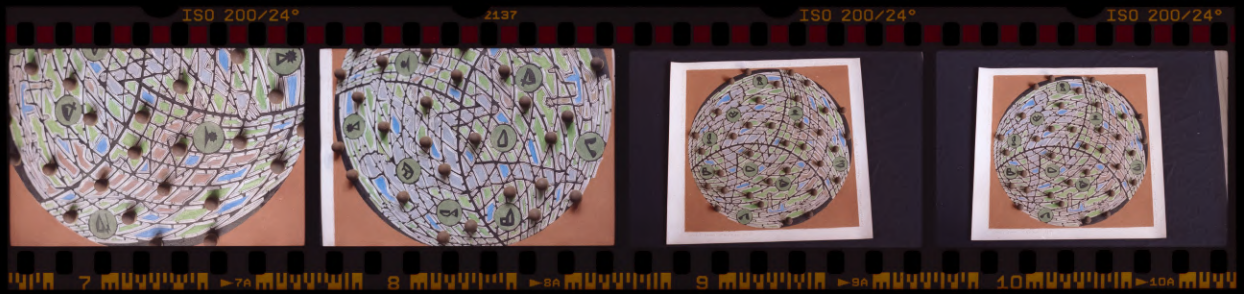




1995
 used in the laboratory
 in conditions and in chemicals and photographic materials
 used in reports/enlargements due to unavoidable changes

Anthropocentric Open Sky (etc)

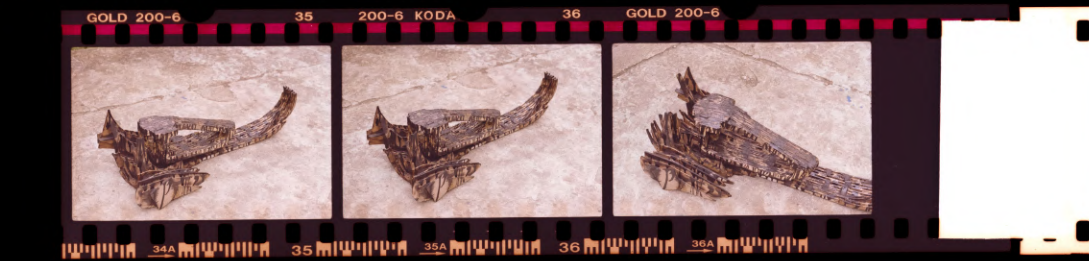
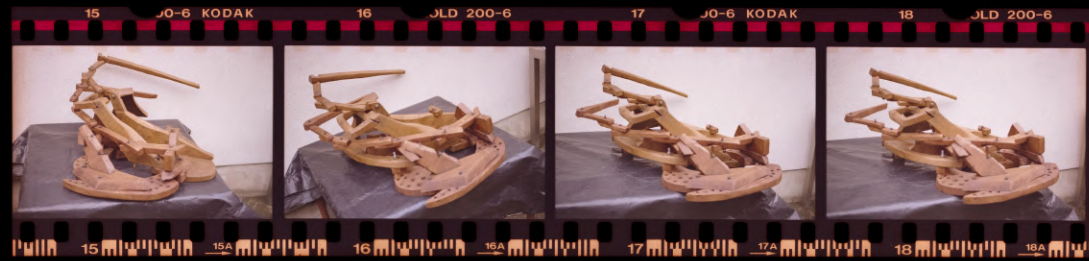




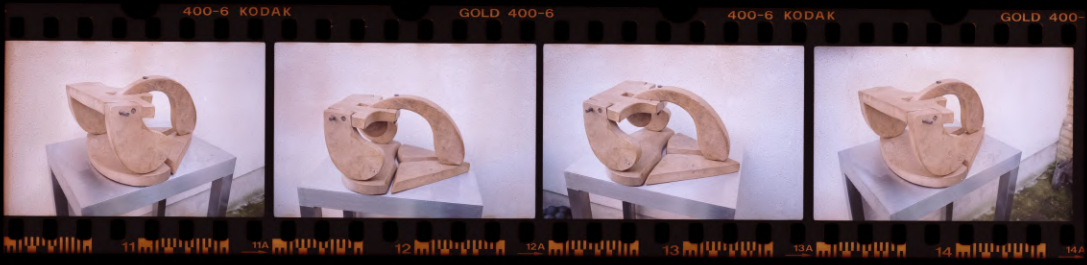
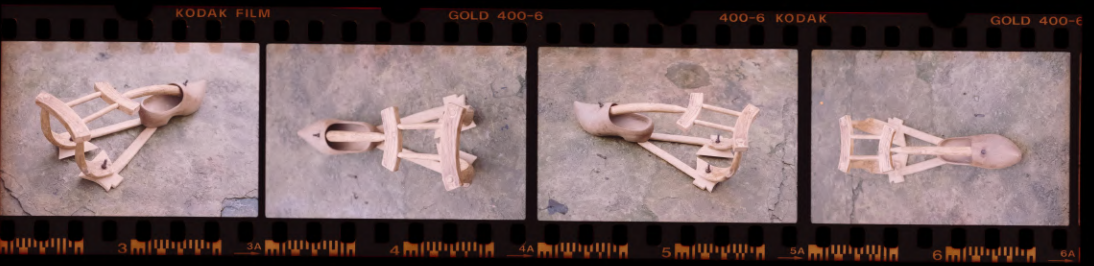


WOOD - deconstv 1984 → 2000

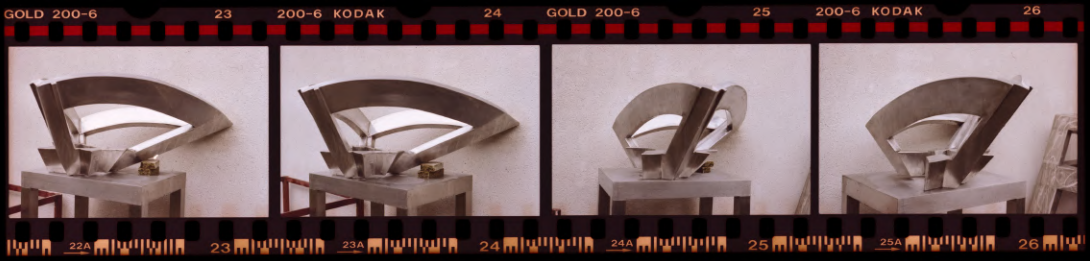


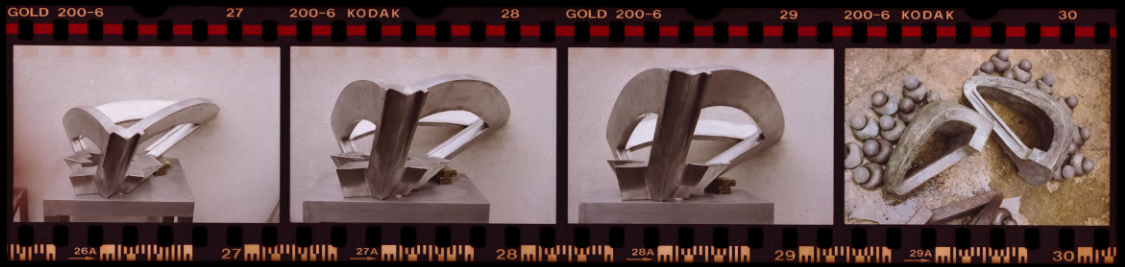


D cont! 2001
as and take it to your FotoView dealer.



NEXT
nowlith
take it to your Foto View a



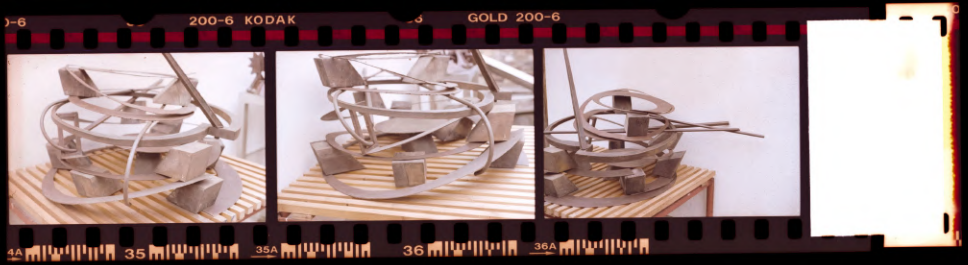
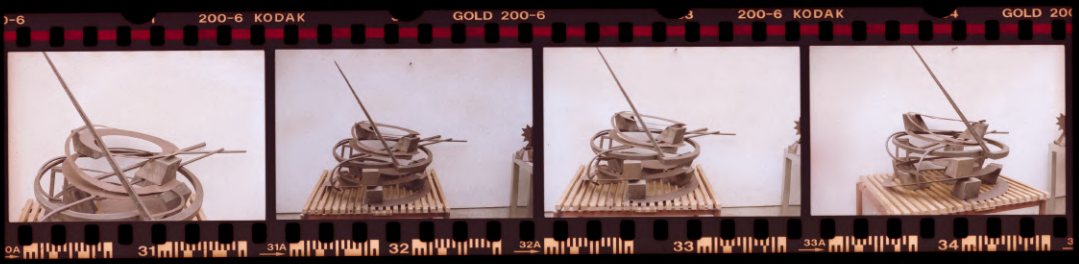
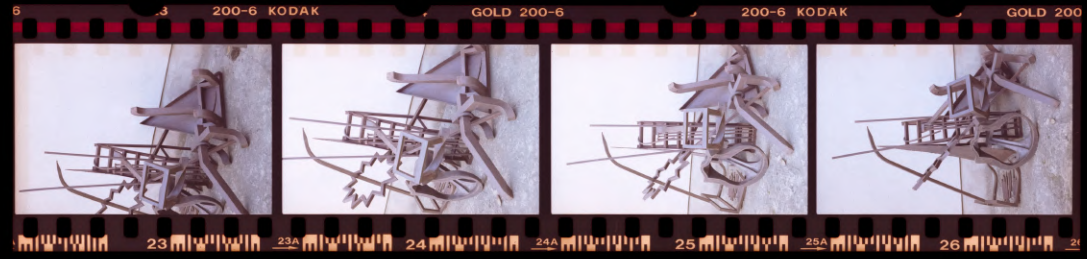


Epigoge converted

stcode

enclose the negatives and take it to your Foto View dealer.





Shapes from the Sky
Bronze

